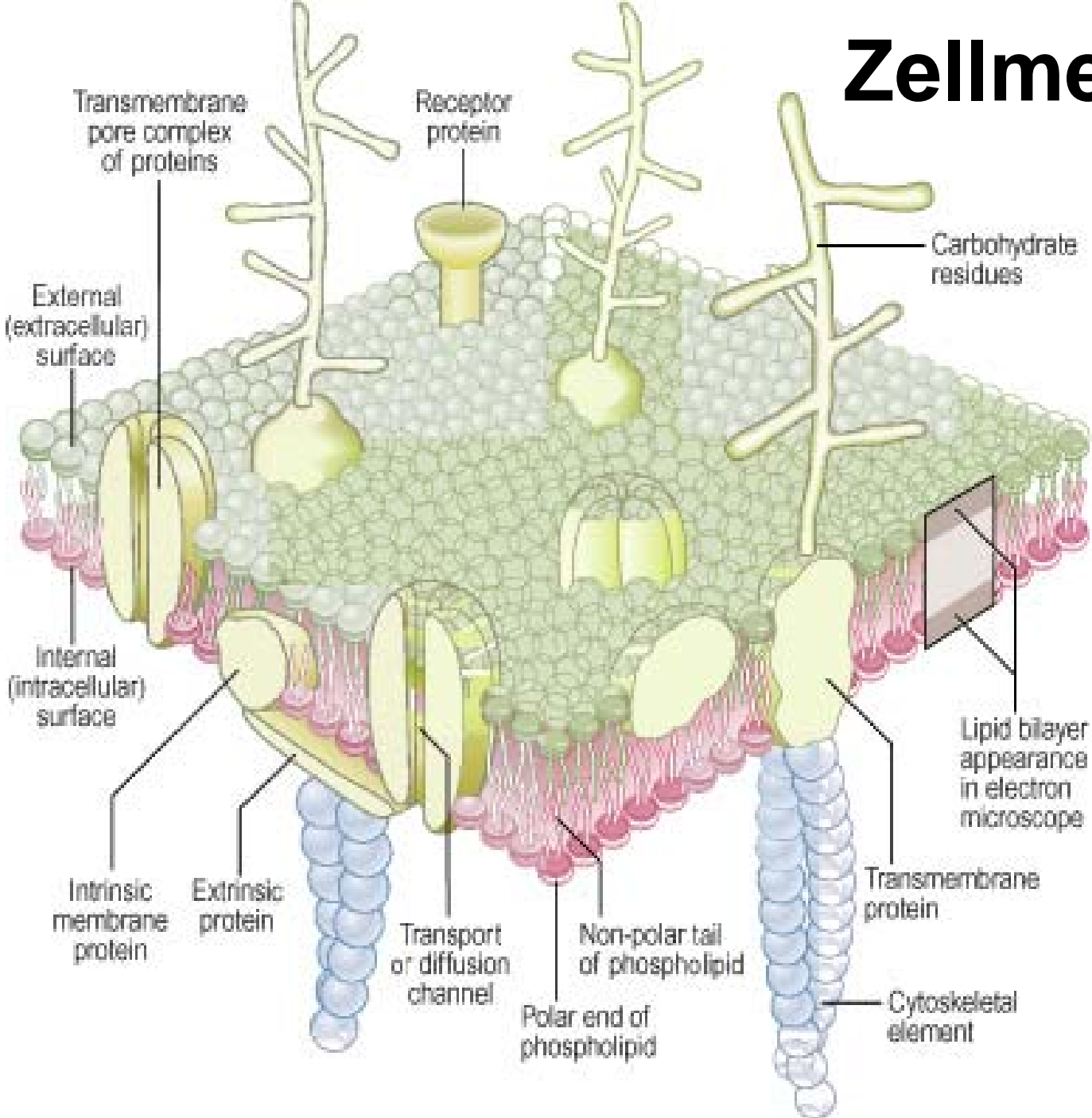


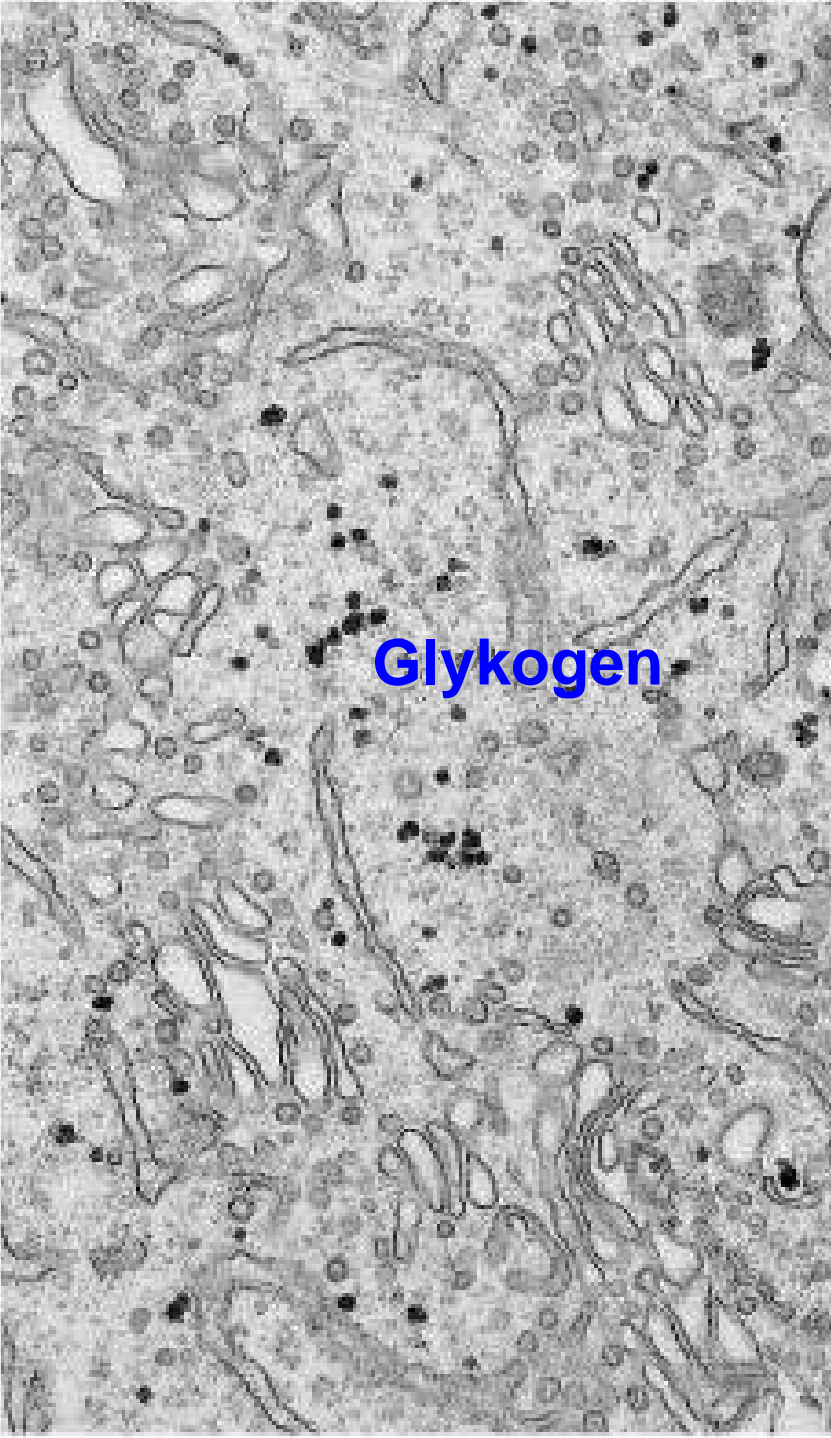
(Säuuger-) Zelle im Überblick

Zellkern



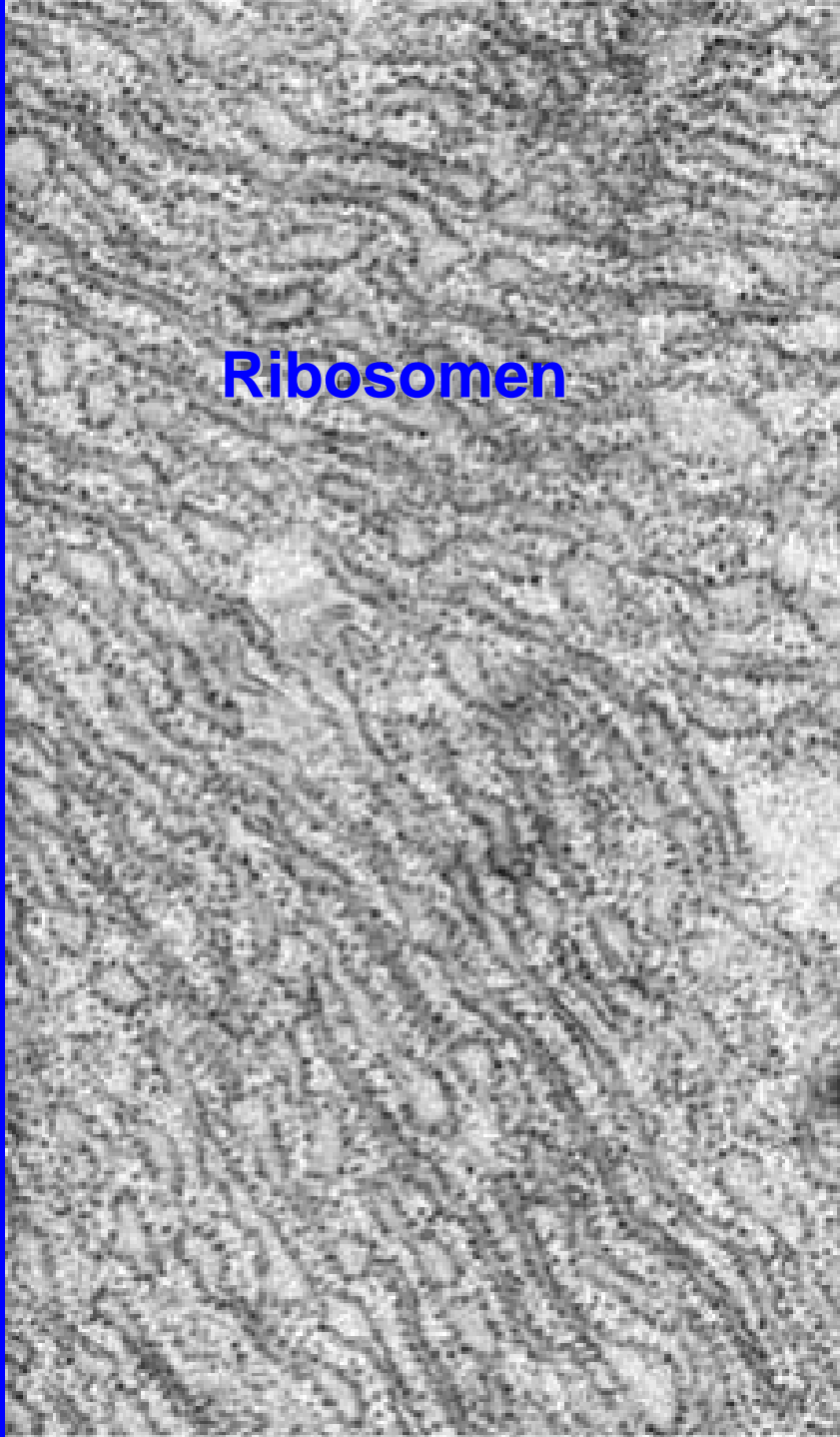
Zellmembran



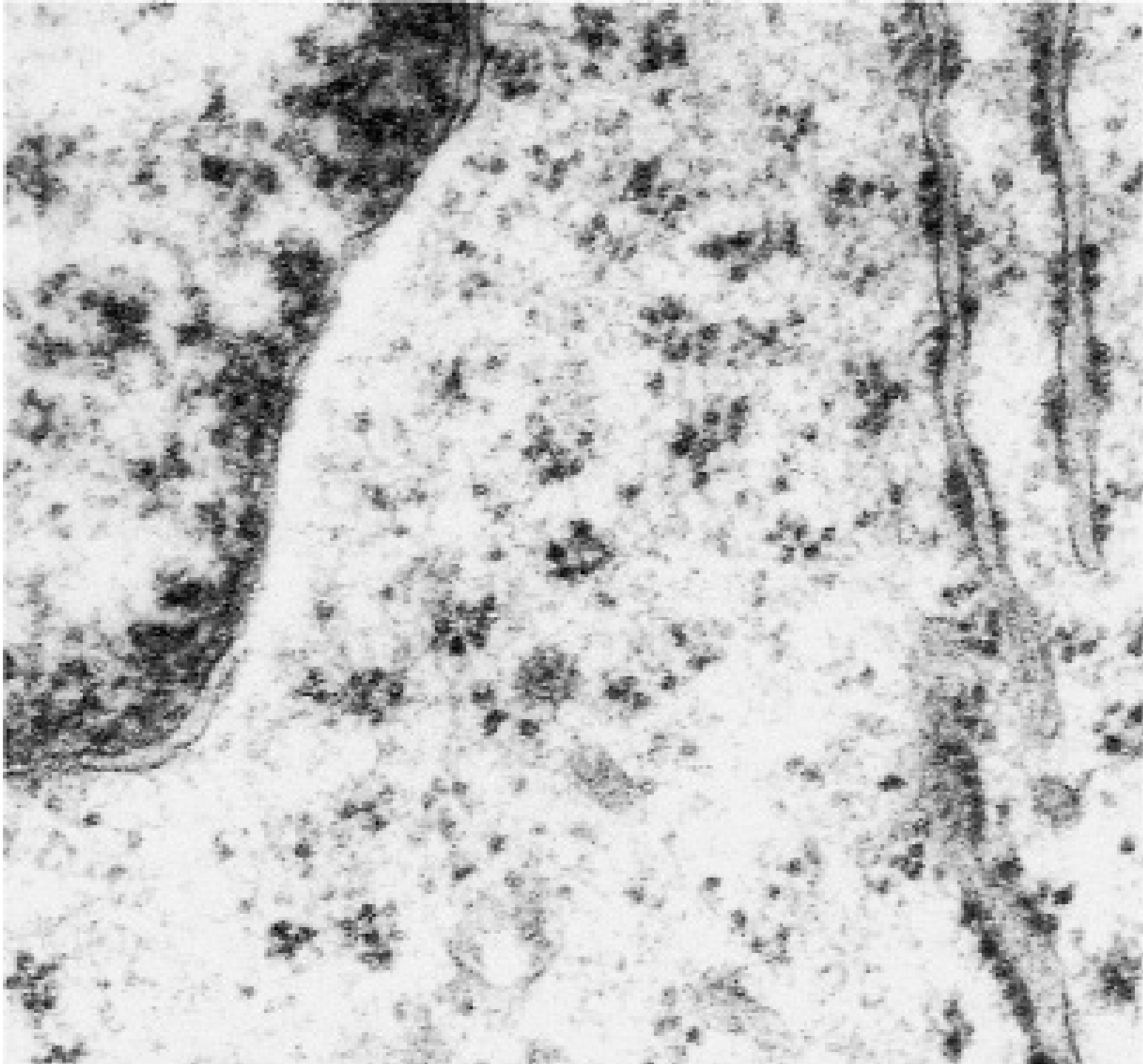


Glykogen

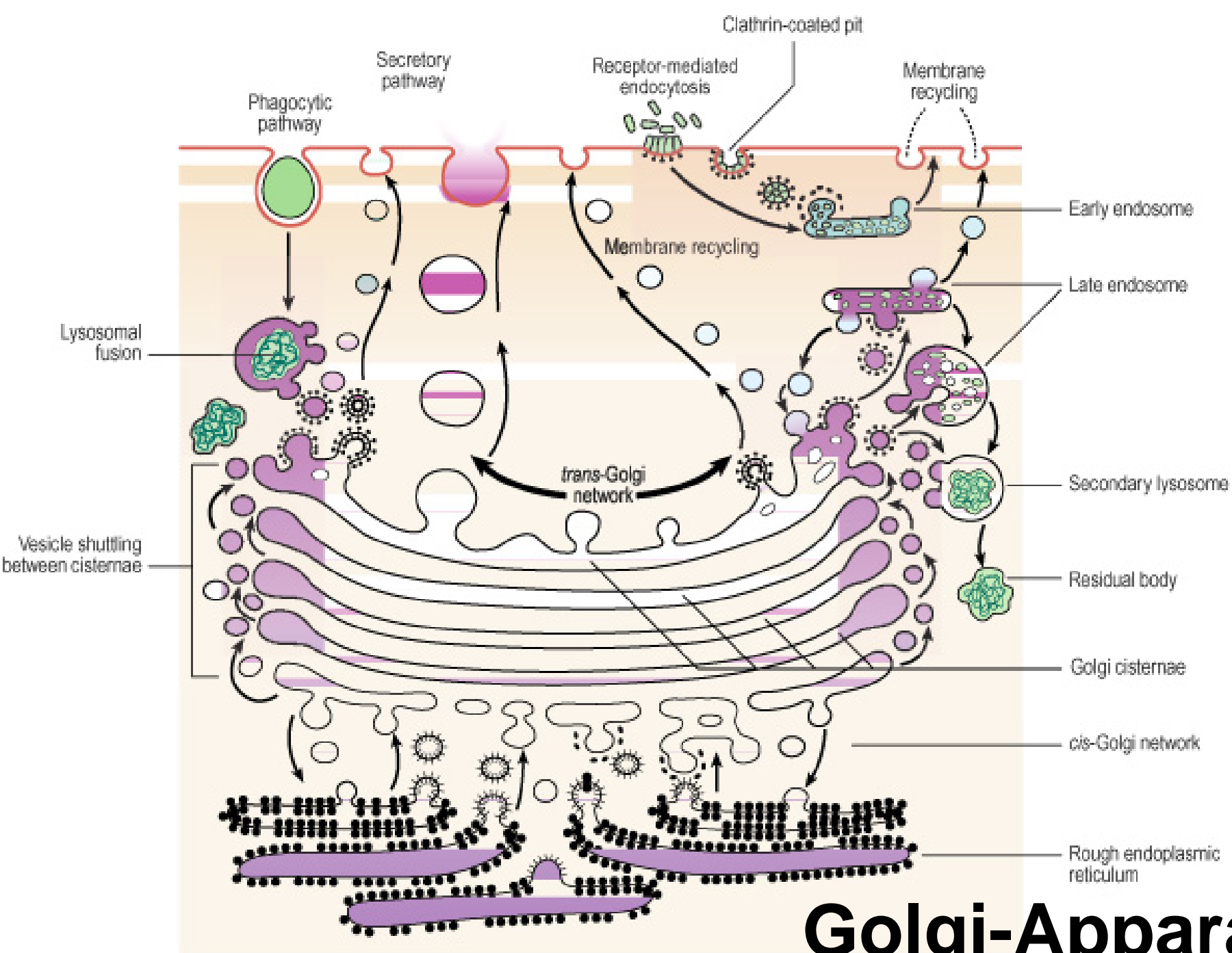
↑ Glattes und raues ER ↓
Endoplasmatisches Retikulum



Ribosomen

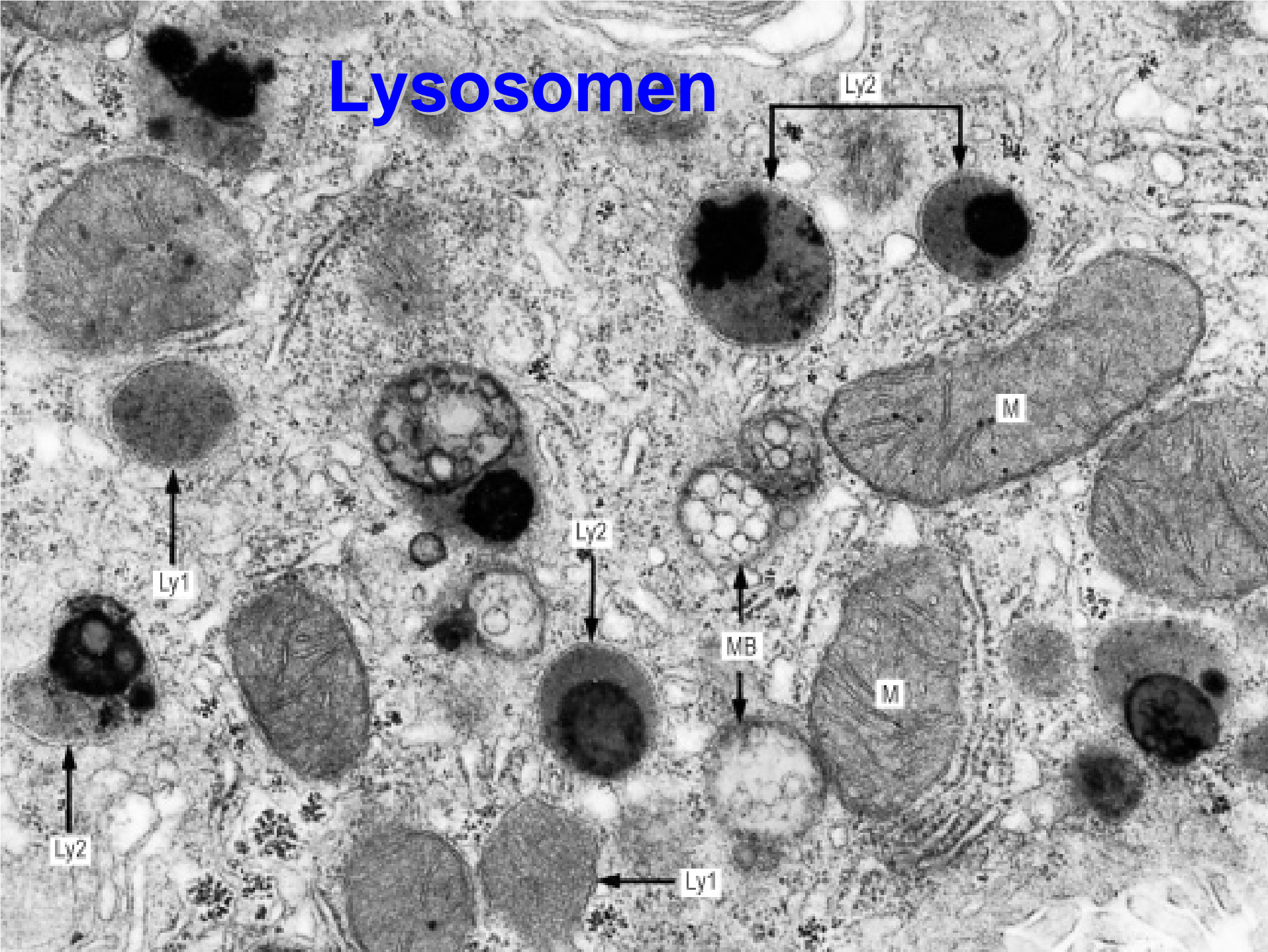


**Ribosomen: einzeln,
gruppiert und am ER**

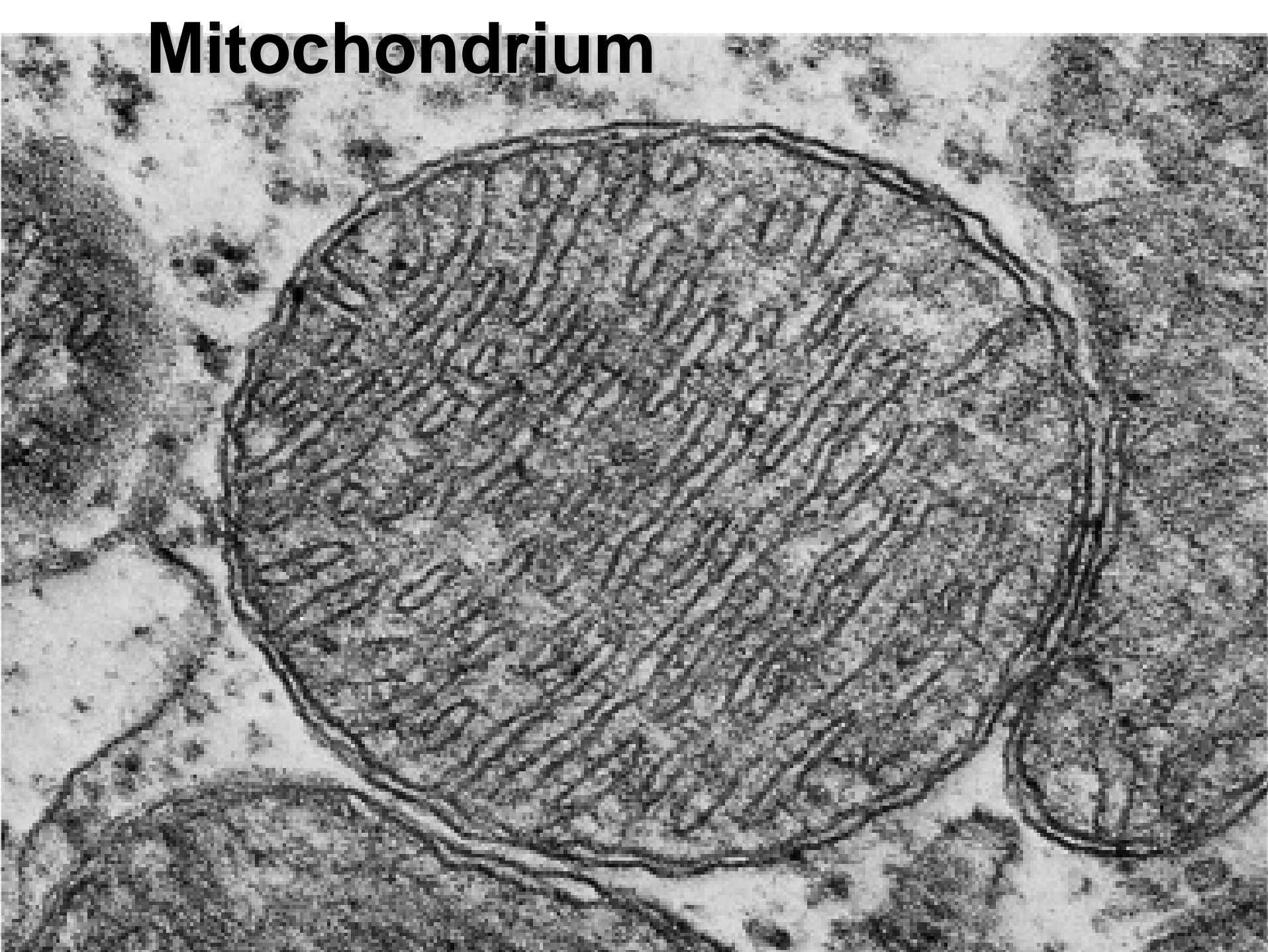


Golgi-Apparat

Lysosomen

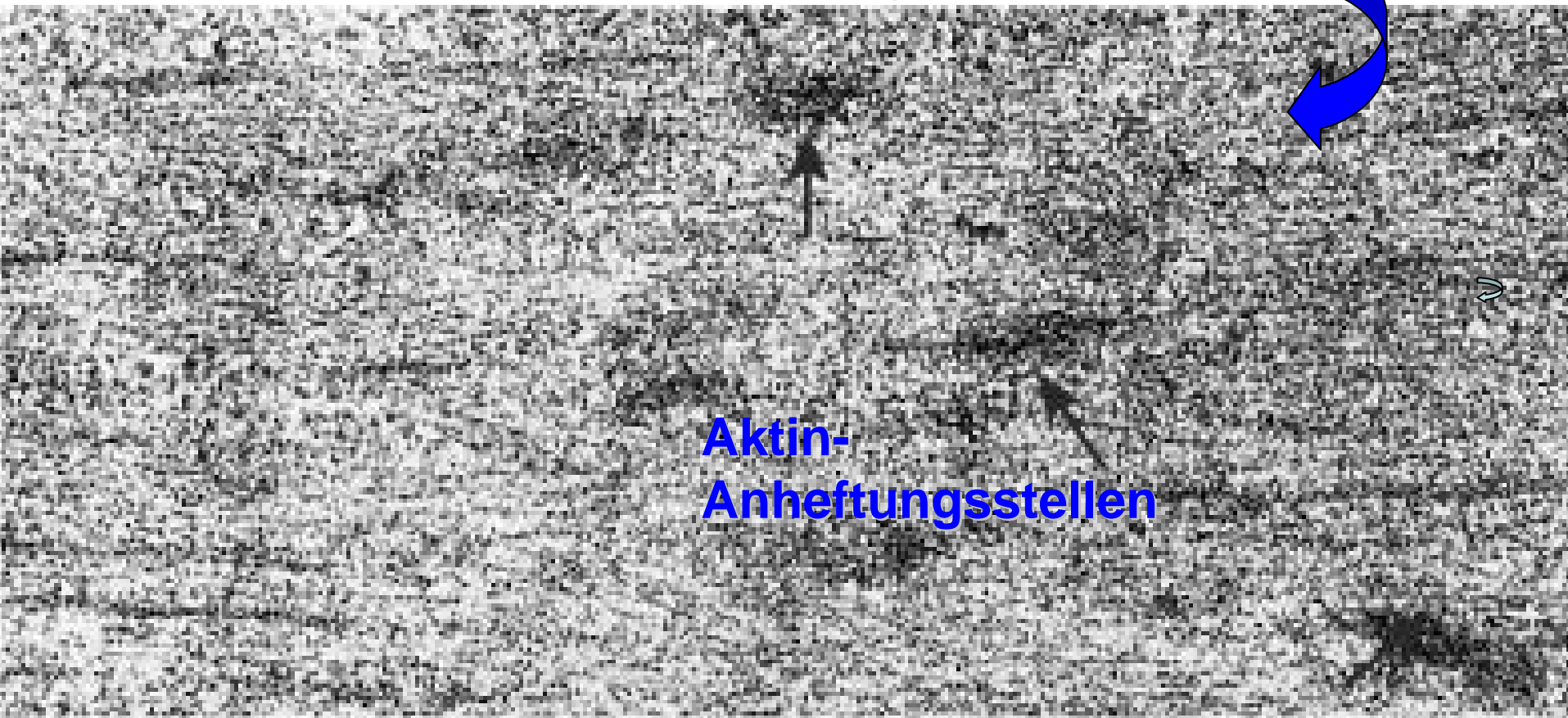


Mitochondrion



Zytoskelett: Filamente

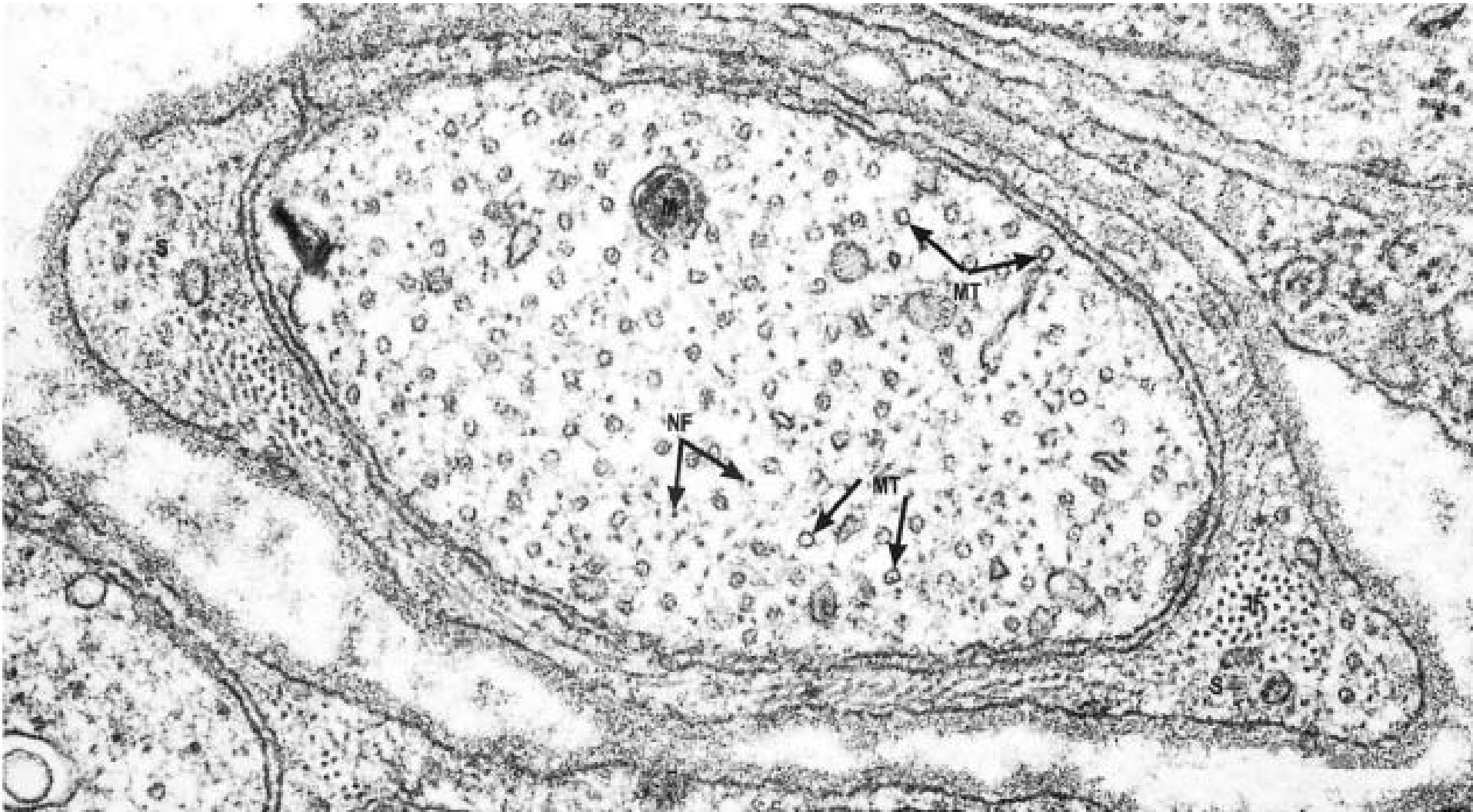
- Mikrotubuli (MT)
- Intermediäre Filamente (z.B. Keratin)
- Mikrofilamente (z.B. Myosin, Aktin)



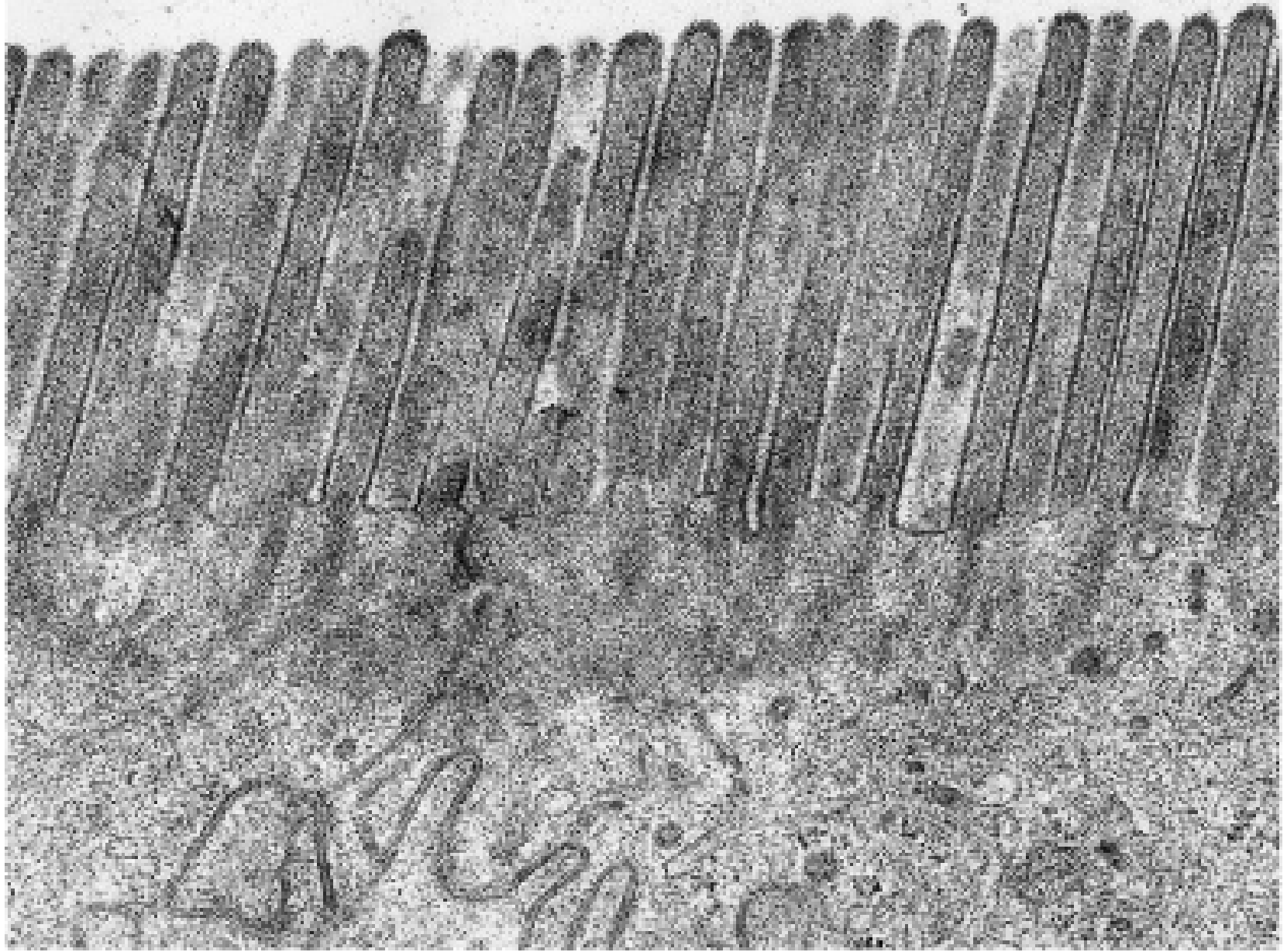
Aktin-
Anheftungsstellen

Mikrotubuli und Neurofilamente

Neurofilamente (NF) = Intermediärfilamente in Neuronen



Mikrovilli



Kino- zilien: 9x2+2 MTs

